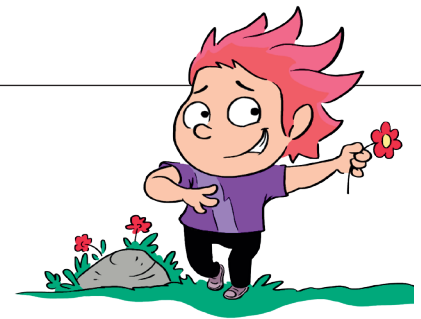


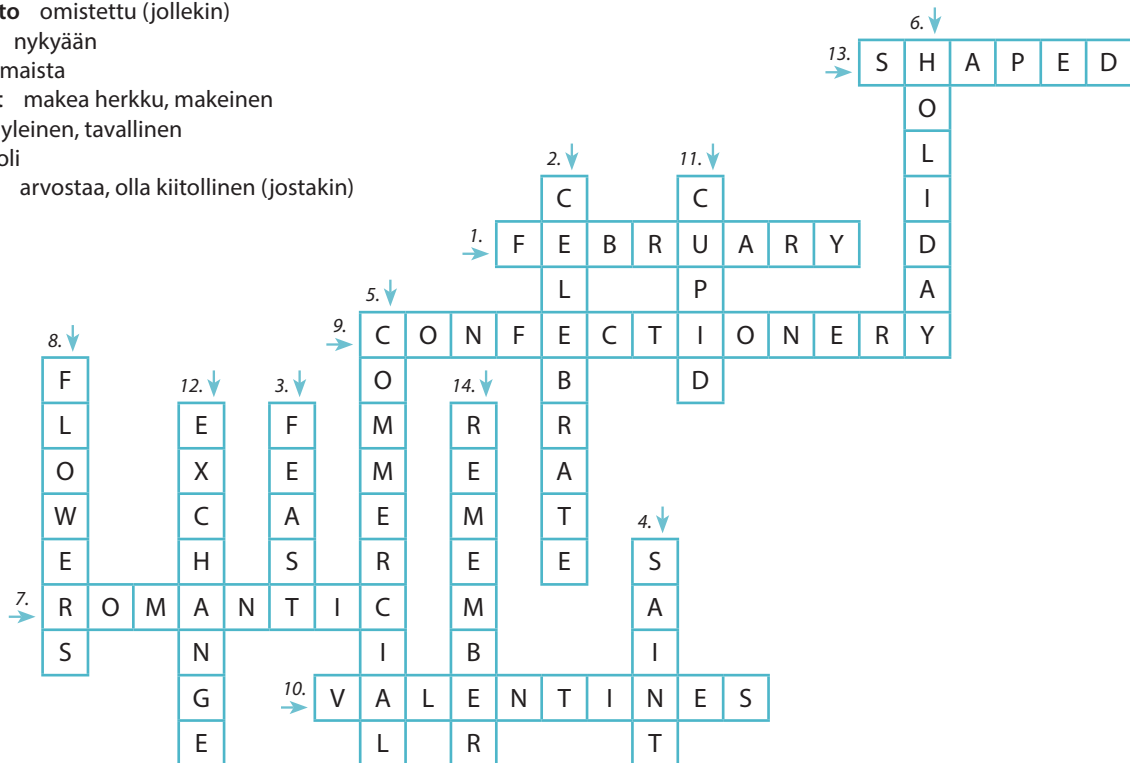
Valentine's Day



Ratkaise ristikko. Saat apua laatikosta.

1. Valentine's Day is in
2. Many people Valentine's Day because it is now part of our culture to spend it so.
3. According to stories, this day was originally a, a religious day dedicated to Saint Valentine.
4. According to stories, Valentine was a, a person that had done important and good things.
5. Nowadays Valentine's Day is not a religious day but a event when many people buy something small.
6. Valentine's Day is not a public when children don't go to school.
7. For many adults, Valentine's Day is a day when they express love for someone.
8. Some people give to their loved ones on this day.
9. Many people also give on this day. These are candies and sweetmeats.
10. The greeting cards most people write are called
11. A common picture on the cards is shooting love arrows.
12. For many, the idea of Valentine's Day is to cards, so you give one and get one.
13. You often see heart- pictures and forms on the cards.
14. Valentine's Day is a great day to your friends, so they know that you appreciate them.

according to (jonkin) mukaan
religious uskonnollinen
dedicated to omistettu (jollekin)
nowadays nykyään
express ilmaista
sweetmeat makea herkku, makeinen
common yleinen, tavallinen
arrow nuoli
appreciate arvostaa, olla kiitollinen (jostakin)



makeiset vaihtaa helmikuu -muotoinen ystävänpäiväkortit Cupido muistaa
 kukat pyhä(päivä) kaupallinen vapaapäivä juhlia pyhimys romanttinen

Miten sinä vietät tai haluaisit viettää ystävänpäivää?
Keskustele parisi kanssa englanniksi tai kirjoita vihkoosi.