



1

$$42 - 15 + 17 - 4 = 40$$

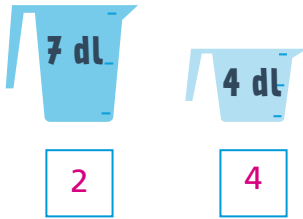


2

Vastaus: 6 min



3



4

21 km



52 km



90 km



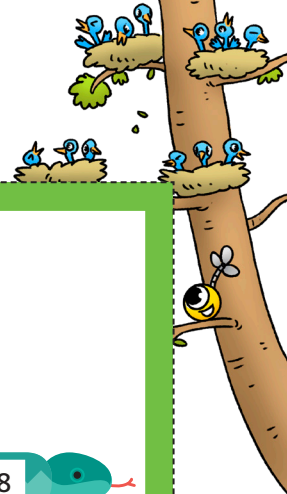
5

Vastaus: 7 pähkinää



6





7



1      2      9

8

$$8 \cdot 4 \cdot 2 : 8 = 8$$



9



7      13      26

10

$$= \underline{40}$$

$$= \underline{10}$$

$$= \underline{20}$$



11



12

$$= \underline{2}$$

$$= \underline{12}$$

$$= \underline{72}$$

